

ELISA Solutions

Cat# No	Product	Page
2108-01/02/05	AsurPure TM Histamine Enzymatic Test Kit	1
2109-01	AsurPure TM Histamine Enzymatic Test Kit for Fish Sauce	2
2110-01	AsurPure TM Florfenicol Test Kit	2
2111-01	AsurPure TM Enrofloxacin Test Kit (Two-Step)	3
2111-05	AsurPure TM Enrofloxacin Test Kit (One-Step)	3
2111-05W	AsurPure TM Enrofloxacin Test Kit (One-Step) -Worldwide	4
2112-01	AsurPure TM Fluoroquinolone Test Kit (Two-Step)	4
2112-06	AsurPure TM Fluoroquinolone Test Kit (One-Step)	5
2112-06W	AsurPure TM Fluoroquinolone Test Kit (One-Step)-Worldwide	5
2113-01	AsurPure TM Malachite Green/Leucomalachite Green Test Kit	6
2114-01	AsurPure TM Chloramphenicol(CAP)Test Kit	6
2114-01M	AsurPure TM Chloramphenicol(CAP)Test Kit(MilkOnly)	7
2115-01	AsurPure TM Crystal Violet/Leucocrystal Violet Test Kit	8
2116-01	AsurPure TM Flumequine Test Kit	8
2117-01	AsurPure TM Sulfadiazine Test Kit	9
2118-01	AsurPure TM Furazolidone (AOZ) Test Kit	9
2118-02P	AsurPure TM Furazolidone(AOZ) (One-Step) Test Kit	10
2119-05W	AsurPure TM Ciprofloxacin (One Step) Test Kit Worldwide	11
2120-01	AsurPure TM Nitrofurantoin (AHD) Test Kit	11
2121-01	AsurPure TM Furaltadone (AMAZ) Test Kit	12
2122-01	AsurPure TM Zearalenone (ZEN) Test Kit	12
2123-01	AsurPure TM Nitrofurazone (SEM) Test Kit	13
2124-01/02	AsurPure TM Total Aflatoxin Test Kit	13-14
2125-01	AsurPure TM Oxytetracycline Test Kit	15
2126-01	AsurPure TM T2 Toxin Test Kit	15
2127-01	AsurPure TM Doxycycline Test Kit	16
2128-01	AsurPure TM Tetracycline Test Kit	16
2129-01	AsurPure TM Sulfonamides Test Kit	17
2130-01	AsurPure TM Ofloxacin Test Kit	18
2131-01	AsurPure TM Lincomycin Test Kit	18
2133-01	AsurPure TM Amantadine Test Kit	19
2134-01	AsurPure TM Aflatoxin M1 Test Kit	19
	TM	

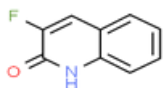
SUPORTE TÉCNICO / IMPORTADOR E DISTRIBUIDOR EXCLUSIVO



JMR TRADING LTDA IMPORTADORA
VP Diagnóstico Distribuidora - CNPJ: 11.857.347/0001-71
Rua Mandaguari, 1752, Pinhais – PR, 83.325-015

(41) 3434-2721
info@vpdiagnostico.com.br
www.vpdiagnostico.com.br





ELISA Solutions

Product	Well	Cat# No
---------	------	---------

AsurPureHistamine Enzymatic Test Kit **1x96** **2108-01**

Histamine Enzymatic ELISA Test Kit is used for the quantitative determination of histamine in seafood/tuna. The kit has the following features:

- » Rapid, aqueous extraction method with high recovery
- » High sensitivity and low detection limit (4 ppm for fresh fish)
- » A rapid (5 minutes) and robust enzyme-based assay

Specificity (Cross- Reactivity) Analytes		Sensitivity (Detection Limit)	
Histamine	Cross- Reactivity(%)	Sample Type	Detection Limit (ppb)
	100.0	Seafood/Tuna	4

AsurPureHistamine Enzymatic Test Kit **2x96** **2108-02**

Histamine Enzymatic ELISA Test Kit is used for the quantitative determination of histamine in seafood/tuna/canned tuna/mahi-mahi. The kit has the following features:

- » Rapid, aqueous extraction method with high recovery
- » High sensitivity and low detection limit (4 ppm for fresh fish)
- » A rapid (5 minutes) and robust enzyme-based assay

Specificity (Cross- Reactivity) Analytes		Sensitivity (Detection Limit)		
Histamine	Cross- Reactivity(%)	Sample Type	Detection Limit	(ppb)
	100.0	Seafood/Tuna/Canned Tuna/Mahi-Mahi	4	

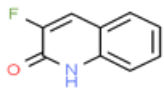
AsurPureHistamine Enzymatic Test Kit **5x96** **2108-05**

Histamine Enzymatic ELISA Test Kit is used for the quantitative determination of histamine in seafood/tuna/canned tuna/mahi-mahi. The kit has the following features:

- » Rapid, aqueous extraction method with high recovery
- » High sensitivity and low detection limit (4 ppm for fresh fish)
- » A rapid (5 minutes) and robust enzyme-based assay

Specificity (Cross- Reactivity) Analytes		Sensitivity (Detection Limit)		
Histamine	Cross- Reactivity(%)	Sample Type	Detection Limit	(ppb)
	100.0	Seafood/Tuna/Canned Tuna/Mahi-Mahi	4	





ELISA Solutions

Product	Well	Cat# No
---------	------	---------

AsurPure™ Histamine Enzymatic Test Kit for Fish Sauce **1x96** **2109-01**

Histamine Enzymatic ELISA Test Kit for Fish Sauce is used for the quantitative determination of histamine in fish sauce. The kit has the following features:

- » Rapid, aqueous extraction method with high recovery
- » High sensitivity and low detection limit (50ppm for fish sauce)
- » A rapid (8 minutes) and robust enzyme-based assay

Specificity (Cross- Reactivity) Analytes		Sensitivity (Detection Limit)	
Histamine	Cross- Reactivity (%)	Sample Type	Detection Limit (ppb) Fish Sauce
	100.0		50

Product	Well	Cat# No
---------	------	---------

AsurPure™ Florfenicol Test Kit **1x96** **2110-01**

Florfenicol ELISA Test Kit is a competitive enzyme immunoassay for the quantitative analysis of florfenicol in feed, fish/shrimp, eggs, meat (beef, chicken and pork), milk and milk powder. The kit has the following features:

- » High recovery (>80%)
- » Low detection limit (0.5 ng/g or ppb) for shrimp, fish and meat samples
- » A quick ELISA assay (less than 2 hours regardless of number of samples)

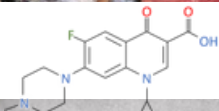
Specificity (Cross- Reactivity) Analytes		Sensitivity (Detection Limit)	
Florfenicol	Cross- Reactivity (%)	Sample Type	Detection Limit (ppb) Feed
Chloramphenicol	100.0	Fish/Shrimp/Meat	0.5
	< 1.0	Egg	0.2
		Milk	1
		Milk powder	0.2

SUPOORTE TÉCNICO / IMPORTADOR E DISTRIBUIDOR EXCLUSIVO

JMR TRADING LTDA IMPORTADORA
 VP Diagnóstico Distribuidora - CNPJ: 11.857.347/0001-71
 Rua Mandaguari, 1752, Pinhais – PR, 83.325-015

(41) 3434-2721
 info@vpdiagnostico.com.br
 www.vpdiagnostico.com.br





ELISA Solutions

Product	Well	Cat# No
---------	------	---------

AsurPure™ Enrofloxacin Test Kit (Two-Step)

1x96

2111-01

Enrofloxacin ELISA (Two-Step) Test Kit is a competitive enzyme immunoassay for the quantitative analysis of Enrofloxacin in shrimp samples. The kit has the following features:

- » High recovery (>80%)
- » High cross reactivity with ciprofloxacin (95%)
- » A quick ELISA assay (less than 2 hours regardless of number of samples)

Specificity (Cross- Reactivity) Analytes		Sensitivity (Detection Limit)	
Cross-	Reactivity (%)	Sample Type	Detection Limit (ppb) Raw
Enrofloxacin	100.0	Shrimp	0.16
Ciprofloxacin	100.0	Cooked Shrimp	0.16

AsurPure™ Enrofloxacin Test Kit (One-Step)

1x96

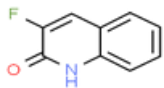
2111-05

Enrofloxacin ELISA (One-Step) Test Kit is a competitive enzyme immunoassay for the quantitative analysis of Enrofloxacin in fish/shrimp samples. The kit has the following features:

- » High recovery (>80%)
- » High cross reactivity with ciprofloxacin (95%)
- » A quick ELISA assay (55 minutes ELISA incubation time)

Specificity (Cross- Reactivity) Analytes		Sensitivity (Detection Limit)	
Cross-	Reactivity (%)	Sample Type	Detection Limit (ppb)
Enrofloxacin	100.0	0.5 (Method I)	
Ciprofloxacin	100.0	Fish/Shrimp	0.2 (Method II)





ELISA Solutions

Product	Well	Cat# No
---------	------	---------

AsurPure™ Enrofloxacin Test Kit (One-Step)	5x96	2111-05W
---	-------------	-----------------

Enrofloxacin ELISA (One-Step) Test Kit is a competitive enzyme immunoassay for the quantitative analysis of Enrofloxacin in meat (chicken, pork), egg and fish/shrimp samples. The kit has the following features:

- » High recovery (>80%)
- » A quick ELISA assay (55 minutes ELISA incubation time)

Specificity (Cross- Reactivity) Analytes	Cross- Reactivity (%)	Sensitivity (Detection Limit) Sample Type	Detection Limit (ppb)
Enrofloxacin	100.0	Fish/Shrimp	0.3 (Method I) 0.12 (Method II)
Ciprofloxacin	100.0	Cooked Shrimp	0.12
		Meat (chicken, pork)	3
		Egg	0.3

AsurPure™ Fluoroquinolone Test Kit (Two-Step)	1x96	2112-01
--	-------------	----------------

Fluoroquinolone ELISA (Two-Step) Test Kit is a competitive enzyme immunoassay for the quantitative analysis of fluoroquinolone in shrimp. The kit has the following features:

- » High recovery (75-100%)
- » A quick ELISA assay (less than 2 hours regardless of number of samples)

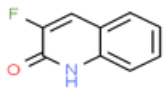
Specificity (Cross- Reactivity) Analytes	Cross- Reactivity (%)	Sensitivity (Detection Limit) Sample Type	Detection Limit (ppb)
Enrofloxacin	100.0	Raw Shrimp	0.16
Ciprofloxacin	100.0	Cooked Shrimp	0.16
Difloxacin	95.0		
Sarafloxacin	98.0		
Norfloxacin	99.0		
Oxolinic acid	121.0		
Pipemidic acid	96.0		
Ofloxacin	87.0		
Danofloxacin	73.0		
Flumequin	75.0		
	68.0		

SUPOORTE TÉCNICO / IMPORTADOR E DISTRIBUIDOR EXCLUSIVO

JMR TRADING LTDA IMPORTADORA
VP Diagnóstico Distribuidora - CNPJ: 11.857.347/0001-71
Rua Mandaguari, 1752, Pinhais – PR, 83.325-015

(41) 3434-2721
info@vpdiagnostico.com.br
www.vpdiagnostico.com.br





ELISA Solutions

Product	Well	Cat# No
---------	------	---------

AsurPure™ Fluoroquinolone Test Kit (One-Step) **1x96** **2112-06**

Fluoroquinolone ELISA (One-Step) Test Kits are a competitive enzyme immunoassay for the quantitative analysis of fluoroquinolone in fish/shrimp. The kit has the following features:

- » High recovery (>75%)
- » A quick ELISA assay (55 minutes ELISA incubation time)

Specificity (Cross- Reactivity) Analytes		Sensitivity (Detection Limit)	
	Cross- Reactivity(%)	Sample Type	Detection Limit (ppb)
Enrofloxacin	100.0	Fish/Shrimp	0.5 (Method I) 0.2 (Method II)
Ciprofloxacin	100.0	Cooked Shrimp	0.3
Difloxacin	95.0		
Sarafloxacin	98.0		
Norfloxacin	99.0		
Oxolinic acid	121.0		
Pipemidic acid	96.0		
Ofloxacin	87.0		
Danofloxacin	73.0		
Flumequin	75.0		
	68.0		

Product	Well	Cat# No
---------	------	---------

AsurPure™ Fluoroquinolone Test Kit (One-Step) **1x96** **2112-06W**

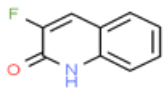
Fluoroquinolone ELISA (One-Step) Test Kits are a competitive enzyme immunoassay for the quantitative analysis of fluoroquinolone in meat (chicken, pork), egg, and fish/shrimp samples. The kit has the following features:

- » High recovery (>75%)
- » A quick ELISA assay (55 minutes ELISA incubation time)

Specificity (Cross- Reactivity) Analytes		Sensitivity (Detection Limit)	
	Cross- Reactivity(%)	Sample Type	Detection Limit (ppb)
Enrofloxacin	100.0	Fish/Shrimp	0.3 (Method I) 0.12 (Method II)
Ciprofloxacin	100.0	Cooked Shrimp	0.12
Difloxacin	95.0	Meat (chicken, pork)	3
Sarafloxacin	98.0	Egg	0.3
Norfloxacin	99.0		
Oxolinic acid	121.0		
Pipemidic acid	96.0		
Ofloxacin	87.0		
Danofloxacin	73.0		
Flumequin	75.0		
	68.0		

SUPOORTE TÉCNICO / IMPORTADOR E DISTRIBUIDOR EXCLUSIVO





ELISA Solutions

Product	Well	Cat# No
---------	------	---------

AsurPureMalachite Green/Leucomalachite Green Test Kit	1x96	2113-01
--	-------------	----------------

Malachite Green/Leucomalachite Green ELISA Test Kit is a competitive enzyme immunoassay for the quantitative analysis of Malachite Green (MG), Leucomalachite Green (LMG) in fish and shrimp samples. The kit has the following features:

- » High recovery (>75%)
- » Convert LMG to MG before detection. Chromatic Malachite Green can be rapidly bio-converted into colorless LMG in fish. A unique oxidant solution in the kit can convert LMG to MG form which can be detected by the kit.
- » A quick ELISA assay (75 minutes ELISA incubation time)

Specificity (Cross- Reactivity) Analytes		Cross- Reactivity(%)	Sensitivity (Detection Limit)	
Malachite Green		100.0	Sample Type	Detection Limit (ppb)
Leucomalachite Green		100.0 (after Oxidation)	Fish/Shrimp	0.03

Product	Well	Cat# No
---------	------	---------

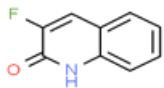
AsurPure™ Chloramphenicol(CAP) Test Kit	1x96	2114-01
--	-------------	----------------

Chloramphenicol ELISA Test Kit is a competitive enzyme immunoassay for the quantitative analysis of Chloramphenicol in feed, fish/shrimp, eggs, honey, meat (beef, chicken and pork), milk and milk powder. The kit has the following features:

- » High recovery (>80%)
- » Low detection limit (0.0125 ng/g or ppb) for shrimp, fish and meat samples
- » A quick ELISA assay (less than one hour regardless of number of samples)

Specificity (Cross- Reactivity) Analytes		Cross- Reactivity(%)	Sensitivity (Detection Limit)	
Chloramphenicol		100.0	Sample Type	Detection Limit (ppb)
Chloramphenicol Glucuronide		72	Feed	0.125
Chloramphenicol base		< 0.5	Fish/Shrimp/Meat	0.0125
Thiamphenicol		< 0.1	Eggs	0.025
Florfenicol		< 0.05	Honey	0.025
			Milk	0.125
			Milk powder	0.025
			Liquid Soap/Cosmetics/ Chlorine/Ice Water	0.025



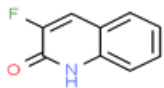


ELISA Solutions

Product	Well	Cat# No																				
AsurPure™ Chloramphenicol(CAP) Test Kit (MilkOnly)	1x96	2114-01M																				
<p>Chloramphenicol ELISA Test Kit is a competitive enzyme immunoassay for the quantitative analysis of Chloramphenicol in milk.</p> <p>The kit has the following features:</p> <ul style="list-style-type: none"> » High recovery (>80%) » Low detection limit (0.025 ng/g or ppb) » A quick ELISA assay (45 minutes incubation time) 																						
<table border="1"> <thead> <tr> <th>Specificity (Cross- Reactivity) Analytes</th> <th>Cross- Reactivity (%)</th> </tr> </thead> <tbody> <tr> <td>Chloramphenicol (CAP)</td> <td>100.0</td> </tr> <tr> <td>Chloramphenicol Glucuronide</td> <td>72</td> </tr> <tr> <td>Chloramphenicol base</td> <td></td> </tr> <tr> <td>Thiamphenicol</td> <td>< 0.5</td> </tr> <tr> <td>Florfenicol</td> <td>< 0.1</td> </tr> <tr> <td></td> <td>< 0.05</td> </tr> </tbody> </table>		Specificity (Cross- Reactivity) Analytes	Cross- Reactivity (%)	Chloramphenicol (CAP)	100.0	Chloramphenicol Glucuronide	72	Chloramphenicol base		Thiamphenicol	< 0.5	Florfenicol	< 0.1		< 0.05	<table border="1"> <thead> <tr> <th colspan="2">Sensitivity (Detection Limit)</th> </tr> <tr> <th>Sample Type</th> <th>Detection Limit (ppb)</th> </tr> </thead> <tbody> <tr> <td>Milk</td> <td>0.025</td> </tr> </tbody> </table>	Sensitivity (Detection Limit)		Sample Type	Detection Limit (ppb)	Milk	0.025
Specificity (Cross- Reactivity) Analytes	Cross- Reactivity (%)																					
Chloramphenicol (CAP)	100.0																					
Chloramphenicol Glucuronide	72																					
Chloramphenicol base																						
Thiamphenicol	< 0.5																					
Florfenicol	< 0.1																					
	< 0.05																					
Sensitivity (Detection Limit)																						
Sample Type	Detection Limit (ppb)																					
Milk	0.025																					

SUPORTE TÉCNICO / IMPORTADOR E DISTRIBUIDOR EXCLUSIVO





ELISA Solutions

Product	Well	Cat# No
---------	------	---------

AsurPure™ Crystal Violet/Leucocrystal Violet Test Kit	1x96	2115-01
--	-------------	----------------

Crystal Violet/LeucoCrystalViolet ELISA is a competitive enzyme immunoassay for the quantitative analysis of Crystal Violet (CV), LeucoCrystal Violet (LCV) in fish and shrimp samples. The kit has the following features:

- » High recovery (>75%)
- » Convert LCV to CV before detection. Chromatic Crystal Violet can be rapidly bio-converted into colorless LCV in fish. A unique oxidant solution in the kit can convert LCV to CV form which can be detected by the kit.
- » A quick ELISA assay (85 minutes ELISA incubation time)

Specificity (Cross-Reactivity) Analytes		Sensitivity (Detection Limit) Sample Type	
Crystal Violet	100.0	Fish/Shrimp	0.1
Leucocrystal Violet	100.0 (after Oxidation)		

AsurPure™ Flumequine Test Kit	1x96	2116-01
--------------------------------------	-------------	----------------

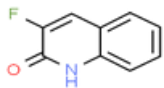
Flumequine ELISA is a competitive enzyme immunoassay for the quantitative analysis of Flumequine in feed, fish/shrimp and meat. The kit has the following features:

- » High recovery (>80%)
- » Low detection limit (0.48 ng/g or ppb) for shrimp, fish and meat sample.
- » A quick ELISA assay (less than one hour regardless of number of samples)
- » Convenient one-step plate wash.

Specificity (Cross-Reactivity) Analytes		Sensitivity (Detection Limit) Sample Type	
Flumequine	100.0	Feed	0.6
		Meat/ Liver/ Kidney/ Fish/ Shrimp	0.48

SUPORTE TÉCNICO / IMPORTADOR E DISTRIBUIDOR EXCLUSIVO





ELISA Solutions

Product	Well	Cat# No
---------	------	---------

AsurPure™ Sulfadiazine Test Kit	1x96	2117-01
--	-------------	----------------

Sulfadiazine ELISA is a competitive enzyme immunoassay for the quantitative analysis of sulfadiazine in feed, fish/shrimp, meat. The kit has the following features:

- » High recovery (>80%)
- » Low detection limit (0.3 ng/g or ppb) for shrimp, fish and meat samples.
- » A quick ELISA assay (less than one hour regardless of number of samples)
- » Convenient one-step plate wash.

Specificity (Cross-Reactivity) Analytes		Sensitivity (Detection Limit) Sample Type	
Sulfadiazine	Cross-Reactivity (%)	Feed	Detection Limit (ppb)
	100.0	0.2	
		Meat/ Liver/ Kidney/ Fish/ Shrimp	0.2

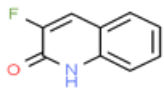
AsurPure™ Furazolidone (AOZ) Test Kit	1x96	2118-01
--	-------------	----------------

Furazolidone (AOZ) ELISA is a competitive enzyme immunoassay for the quantitative analysis of AOZ in feed, fish/shrimp, eggs or meat (beef, chicken and pork). The kit has the following features:

- » High recovery (>80%)
- » Low detection limit (0.03 ng/g or ppb) for shrimp, fish and meat samples.
- » A quick ELISA assay (less than one hour regardless of number of samples)

Specificity (Cross-Reactivity) Analytes		Sensitivity (Detection Limit) Sample Type	
AOZ	Cross-Reactivity (%)	Feed	Detection Limit (ppb)
AMOZ	100.0	0.12	
SEM	< 0.05	Fish/Shrimp/Meat	0.03
AHD	< 0.06	Egg/Egg Powder	0.06
	< 0.05		





ELISA Solutions

Product	Well	Cat# No
---------	------	---------

AsurPure™ Furazolidone (AOZ) (One Step) Test Kit	1x96	2118-02P
---	-------------	-----------------

Furazolidone (AOZ) ELISA is a competitive enzyme immunoassay for the quantitative analysis of AOZ in feed, fish/shrimp, eggs or meat (beef, chicken and pork). The kit has the following features:

- » High recovery (>80%)
- » Low detection limit (0.01ng/g or ppb) for shrimp, fish and meat samples.
- » A quick ELISA assay (less than one hour regardless of number of samples)

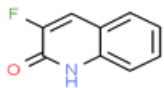
Specificity (Cross- Reactivity) Analytes		Cross- Reactivity(%)	Sensitivity (Detection Limit)	
			Sample Type	Detection Limit (ppb)
AOZ		100.0	Feed	0.02
AMOZ		< 0.04	Fish/Shrimp/Meat	0.01
SEM		< 0.07	Egg/Egg Powder	0.01
AHD		< 0.06		

SUPOORTE TÉCNICO / IMPORTADOR E DISTRIBUIDOR EXCLUSIVO

JMR TRADING LTDA IMPORTADORA
VP Diagnóstico Distribuidora - CNPJ: 11.857.347/0001-71
Rua Mandaguari, 1752, Pinhais – PR, 83.325-015

(41) 3434-2721
info@vpdiagnostico.com.br
www.vpdiagnostico.com.br





ELISA Solutions

Product	Well	Cat# No
---------	------	---------

AsurPure™ Ciprofloxacin (One Step) Test Kit	1x96	2119-05W
--	-------------	-----------------

Ciprofloxacin ELISA (One Step) is a competitive enzyme immunoassay for the quantitative analysis of ciprofloxacin in meat (chicken, pork), egg and fish/shrimp samples. The kit has the following features:

- » High recovery (>80%)
- » A quick ELISA assay (55 minutes ELISA incubation time)

Specificity (Cross-Reactivity) Analytes		Sensitivity (Detection Limit)	
Sample Type	Detection Limit (ppb)	Sample Type	Detection Limit (ppb)
Ciprofloxacin	100.0	0.3 (Method I)	
		Fish/Shrimp	0.12 (Method II)
		Cooked Shrimp	0.12
		Meat (chicken, pork)	3
		Egg	0.3

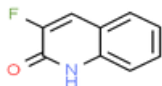
AsurPure Nitrofurantoin (AHD) Test Kit	1x96	2120-01
---	-------------	----------------

Nitrofurantoin (AHD) ELISA is a competitive enzyme immunoassay for the quantitative analysis of AHD in feed, fish/shrimp, eggs or meat (beef, chicken and pork). The kit has the following features:

- » High recovery (>80%)
- » Low detection limit (0.03 ng/g or ppb) for shrimp, fish and meat samples.
- » A quick ELISA assay (less than one hour regardless of number of samples)

Specificity (Cross-Reactivity) Analytes		Sensitivity (Detection Limit)	
Sample Type	Detection Limit (ppb)	Sample Type	Detection Limit (ppb)
AHD	100.0	Feed	0.12
AMOZ	< 0.05	Fish/Shrimp/Meat	0.06
SEM	< 0.06	Egg/Egg Powder	0.06
AOZ	< 0.05		





ELISA Solutions

Product	Well	Cat# No
---------	------	---------

AsurPure™ Furalfadone (AMTZ) Test Kit	1x96	2121-01
--	-------------	----------------

Furalfadone (AMTZ) ELISA is a competitive enzyme immunoassay for the quantitative analysis of AMTZ in feed, fish/shrimp, eggs or meat (beef, chicken and pork). The kit has the following features:

- » High recovery (>80%)
- » Low detection limit (0.02ng/g or ppb) for shrimp, fish and meat samples.
- » A quick ELISA assay (less than one hour regardless of number of samples)

Specificity	(Cross- Reactivity) Analytes	Cross- Reactivity(%)
AMTZ		100.0
AHD		< 0.04
SEM		< 0.06
AOTZ		< 0.05

Sensitivity (Detection Limit)	
Sample Type	Detection Limit (ppb)
Feed	0.08
Fish/Shrimp/Meat	0.04
Egg/Egg Powder	0.04

AsurPure™ Zearalenone (ZEN) Test Kit	1x96	2122-01
---	-------------	----------------

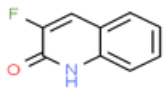
Zearalenone (ZEN) ELISA is a competitive enzyme immunoassay for the quantitative analysis of Zearalenone in feed, cereals, dried meat/fish, milk, seed and other sample types. The kit has the following features:

- » High recovery (>80%)
- » Low detection limit
- » A quick ELISA assay (less than one hour regardless of number of samples)

Specificity	(Cross- Reactivity) Analytes	Cross- Reactivity(%)
Zearalenone		100.0

Sensitivity (Detection Limit)	
Sample Type	Detection Limit (ppb)
Dried Meat/Fish, Cereal, 20 Feed, Seed	
Milk	10





ELISA Solutions

Product	Well	Cat# No
---------	------	---------

AsurPure Nitrofurazone (SEM) Test Kit	1x96	2123-01
--	-------------	----------------

Nitrofurazone (SEM) ELISA is a competitive enzyme immunoassay for the quantitative analysis of SEM in feed, fish/shrimp, eggs or meat (beef, chicken and pork). The kit has the following features:

- » High recovery (>80%)
- » Low detection limit (0.05ng/g or ppb) for shrimp, fish and meat samples.
- » A quick ELISA assay (less than one hour regardless of number of samples)

Specificity	(Cross-
Reactivity) Analytes	Cross-
SEM	Reactivity(%)
AHD	100.0
AMOZ	< 0.03
AOZ	< 0.05

Sensitivity (Detection Limit)	
Sample Type	Detection Limit (ppb)
Feed	0.2
Fish/Shrimp/Meat	0.1
Egg/Egg Powder	0.1

< 0.06

AsurPure™ Total Aflatoxin Test Kit	1x96	2124-01
---	-------------	----------------

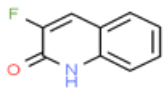
Total Aflatoxin ELISA is a competitive enzyme immunoassay for the quantitative analysis of Aflatoxin B1, B2, M1, G1 and other Aflatoxins in feed, cereal, dried meat/fish and seed. The unique features of this kit are:

- » High recovery (75-120%)
- » Low detection limit
- » A quick ELISA assay (less than one hour regardless of number of samples)

Specificity	(Cross-
Reactivity) Analytes	Cross-
Aflatoxin B1	Reactivity(%) 100
Aflatoxin B2	79
Aflatoxin M1	61
Aflatoxin M2	32
Aflatoxin G1	68
Aflatoxin G2	12

Sensitivity (Detection Limit)	
Sample Type	Detection Limit (ppb)
Dried Meat/Fish, Cereal, Feed, Seed	0.5





ELISA Solutions

Product	Well	Cat# No
---------	------	---------

AsurPure™ Total Aflatoxin Test Kit	1x96	2124-02
---	-------------	----------------

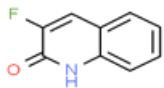
Total Aflatoxin ELISA is a competitive enzyme immunoassay for the quantitative analysis of Aflatoxin B1, B2, M1, G1 and other Aflatoxins in feed, cereal, driedmeat/fishand seed. The uniquefeatures of this kit are:

- » High recovery (75-120%)
- » Low detection limit(5ppb)
- » Only4 standarts
- » No transfer plateneeded
- » A quick ELISA assay (5 min. incubation)

Specifity	(Cross-
Reactivity) Analytes	Cross-
Aflatoxin B1	Reactivity(%) 100
Aflatoxin B2	79
Aflatoxin M1	61
Aflatoxin M2	32
Aflatoxin G1	68
Aflatoxin G2	12

Sensitivity (Detection Limit)	
Sample Type	Detection Limit (ppb)
Dried Meat/Fish, Cereal, 5 Feed, Seed	





ELISA Solutions

Product	Well	Cat# No
---------	------	---------

AsurPure[™]Oxytetracycline Test Kit	1x96	2125-01
---	-------------	----------------

Oxytetracycline ELISA is a competitive enzyme immunoassay for the quantitative analysis of Oxytetracycline in shrimp and fish sample types. The kit has the following features:

- » High recovery (>80%)
- » Low detection limit (1ng/g or ppb) for shrimp and fish samples
- » A quick ELISA assay (less than one hour regardless of number of samples)

Specificity (Cross-Reactivity) Analytes	Cross-Reactivity (%)
Oxytetracycline	100
Doxycycline	95
Chlortetracycline	> 100
Tetracycline	> 100

Sensitivity (Detection Limit)	
Sample Type	Detection Limit (ppb)
Shrimp 1	
Fish 1	

AsurPure[™] T2 Toxin Test Kit	1x96	2126-01
---	-------------	----------------

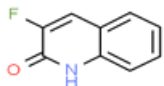
T2 Toxin ELISA is a competitive enzyme immunoassay for the quantitative analysis of T2 Toxin in feed, cereals, dried meat/fish, seed and other sample types. The kit has the following features:

- » High recovery (>80%)
- » Low detection limit
- » A quick ELISA assay (less than one hour regardless of number of samples)

Specificity (Cross-Reactivity) Analytes	Cross-Reactivity (%)
T2 Toxin	100.0
Acetyl-T-2	12
HT-2	3
Iso-T-2	2

Sensitivity (Detection Limit)	
Sample Type	Detection Limit (ppb)
Dried Meat/Fish, Cereal, Feed, Seed	





ELISA Solutions

Product	Well	Cat# No
---------	------	---------

AsurPure[™] Doxycycline Test Kit	1x96	2127-01
--	-------------	----------------

Doxycycline ELISA is a competitive enzyme immunoassay for the quantitative analysis of Doxycycline in shrimp and fish sample types. The kit has the following features:

- » High recovery (>80%)
- » Low detection limit (2ng/g or ppb) for shrimp and fish samples
- » A quick ELISA assay (less than one hour regardless of number of samples)

Specificity (Cross-Reactivity) Analytes	Cross-Reactivity (%)
Doxycycline	100
Oxytetracycline	> 100
Chlortetracycline	> 100
Tetracycline	> 100

Sensitivity (Detection Limit)	
Sample Type	Detection Limit (ppb)
Shrimp 2	
Fish 2	

AsurPure[™] Tetracycline Test Kit	1x96	2128-01
---	-------------	----------------

Tetracycline ELISA is a competitive enzyme immunoassay for the quantitative analysis of Tetracycline in chicken, shrimp and honey sample types. The kit has the following features:

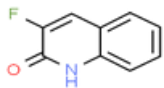
- » High recovery (>80%)
- » Low detection limit (2ng/g or ppb) for chicken, shrimp and honey samples
- » A quick ELISA assay (less than one hour regardless of number of samples)

Specificity (Cross-Reactivity) Analytes	Cross-Reactivity (%)
Tetracycline	100
Doxycycline	30
Chlortetracycline	105
Oxytetracycline	75

Sensitivity (Detection Limit)	
Sample Type	Detection Limit (ppb)
Shrimp/Chicken 1	
Honey 1	

SUPORTE TÉCNICO / IMPORTADOR E DISTRIBUIDOR EXCLUSIVO





ELISA Solutions

Product	Well	Cat# No
---------	------	---------

AsurPure™ Sulfonamides Test Kit	1x96	2129-01
--	-------------	----------------

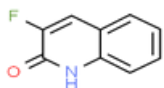
Sulfonamides ELISA is a competitive enzyme immunoassay for the quantitative analysis of Sulfonamides in shrimp and fish sample types. The kit has the following features:

- » High recovery (>80%)
- » Low detection limit (0.4ng/g or ppb) for shrimp and fish samples
- » A quick ELISA assay (less than one hour regardless of number of samples)

Specificity (Cross-Reactivity) Analytes	Cross-Reactivity (%)
Sulfamethoxazole	100
Sulfaquinoxaline	> 100
Sulfamethoxine	> 100
Sulfadiazine	> 100
Sulfabenzoyl	> 100
Sulfamoxole	> 100
Sulfamethazine	> 100
Sulfisomidine	> 100
Sulfisoxazole	> 100
Sulfamonomethoxine	> 100
Sulfaclozine	> 100
Sulfadoxine	> 100
Sulfachloropyridazine	> 100
Sulfamerazine	> 100
Sulfanilamide	> 100
Salicylazosulfapyridine	> 100
Sulfapyridine	60 %
Sulfamethizole	40 %
Sulfa thiazole	20 %

Sensitivity (Detection Limit)	
Sample Type	Detection Limit (ppb)
Shrimp	0.4
Fish	0.4





ELISA Solutions

Product	Well	Cat# No
---------	------	---------

AsurPure™ Ofloxacin Test Kit	1x96	2130-01
-------------------------------------	-------------	----------------

Ofloxacin ELISA is a competitive enzyme immunoassay for the quantitative analysis of Ofloxacin in meat (chicken, pork), egg and fish/shrimp samples. The kit has the following features:

- » High recovery (>80%)
- » A quick ELISA assay (45 minutes ELISA incubation time)

Specificity (Cross-Reactivity) Analytes		Sensitivity (Detection Limit) Sample Type	
Ofloxacin	Cross-Reactivity (%)	Chicken /Egg /Pork /Fish	Detection Limit (ppb)
Enrofloxacin	100%	0.4	
Ciprofloxacin	0.5 %	Shrimp	
	0.05 %		

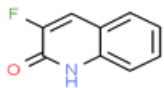
AsurPure™ Lincomycin Test Kit	1x96	2131-01
--------------------------------------	-------------	----------------

Lincomycin ELISA is a competitive enzyme immunoassay for the quantitative analysis of Lincomycin in chicken, pork, honey, serum and urine sample types. The kit has the following features:

- » High recovery (>80%)
- » Low detection limit (1.5ng/g or ppb) for chicken, pork and honey samples
- » A quick ELISA assay (less than one hour regardless of number of samples)

Specificity (Cross-Reactivity) Analytes		Sensitivity (Detection Limit) Sample Type	
Lincomycin	Cross-Reactivity (%)	Chicken/Pork	Detection Limit (ppb)
	100	1.5	
		Honey	6
		Serum/Urine	1.5





ELISA Solutions

Product	Well	Cat# No
---------	------	---------

AsurPure™ Amantadine Test Kit	1x96	2133-01
--------------------------------------	-------------	----------------

Amantadine ELISA is a competitive enzyme immunoassay for the quantitative analysis of Amantadine in chicken and duck samples. The kit has the following features:

- » High recovery (>80%)
- » Low detection limit (0.16 ng/g or ppb)
- » A quick ELISA assay (less than one hour regardless of number of samples)

Specificity (Cross-Reactivity) Analytes		Sensitivity (Detection Limit) Sample Type Detection Limit (ppb)	
Amantadine	Cross-Reactivity (%) 100	Chicken/Duck	0.16

Product	Well	Cat# No
---------	------	---------

AsurPure™ Aflatoxin M1 Test Kit	1x96	2134-01
--	-------------	----------------

Aflatoxin M1 ELISA is a competitive enzyme immunoassay for the quantitative analysis of Aflatoxin M1 in milk sample types. The kit has the following features:

- » High recovery (>80%)
- » Low detection limit (0.004 ng/g or ppb)
- » No sample preparation procedure
- » A quick ELISA assay (45 minutes incubation)

Specificity (Cross-Reactivity) Analytes		Sensitivity (Detection Limit) Sample Type Detection Limit (ppb)	
Aflatoxin M1	Cross-Reactivity (%) 100	Milk	0.004

